

MINI SUITE FOR SOLO TUBA

JUSTIN WRITER

Prelude ♩ = 60

mf

5

f

9

mp

13

Mvmt I, Somewhat Bouncy ♩ = 120

pp

f

18

>

22

>

26

>

2

30

34

39

43

48

54

59

65

70

75 *molto rall.* ----- *a tempo*

Musical staff 75-78 in bass clef. It begins with a *molto rallentando* section (measures 75-78) featuring a series of eighth notes with accents and slurs. A dynamic marking of *f* (forte) is placed below the staff, with a hairpin crescendo leading into measure 79.

Musical staff 79-82 in bass clef. It continues with eighth notes and slurs, maintaining the *f* dynamic.

Musical staff 83-86 in bass clef. It continues with eighth notes and slurs, maintaining the *f* dynamic.

Musical staff 87-91 in bass clef. It features a mix of eighth notes and quarter notes, ending with a double bar line and a 4/4 time signature change.

92 **Interlude** ♩ = 60

Musical staff 92-96 in bass clef, 4/4 time. It begins with a dynamic marking of *mf* (mezzo-forte) and features a mix of quarter and eighth notes.

Musical staff 97-102 in bass clef. It features a mix of quarter and eighth notes with slurs. A dynamic marking of *mp* (mezzo-piano) is placed below the staff.

103 **Mvmt II, Aggressive** ♩ = 160

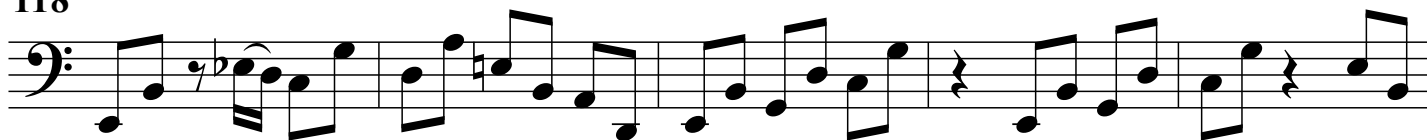
Musical staff 103-108 in bass clef. It begins with a dynamic marking of *p* (piano) and includes a *pp* (pianissimo) section. The staff changes to 3/4 time and features a dynamic marking of *f* (forte).

Musical staff 109-112 in bass clef. It continues with eighth notes and slurs.

114



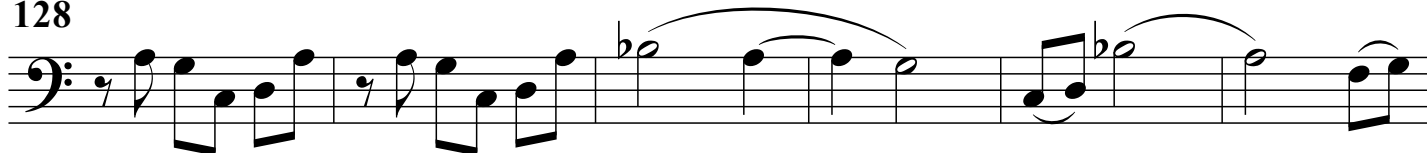
118



123



128



134



139



144



149



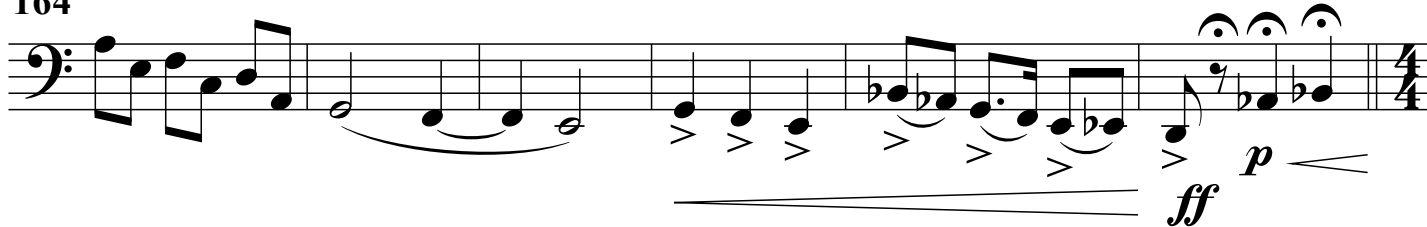
154



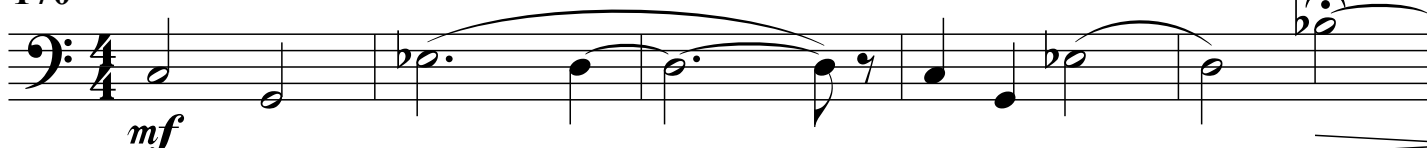
160



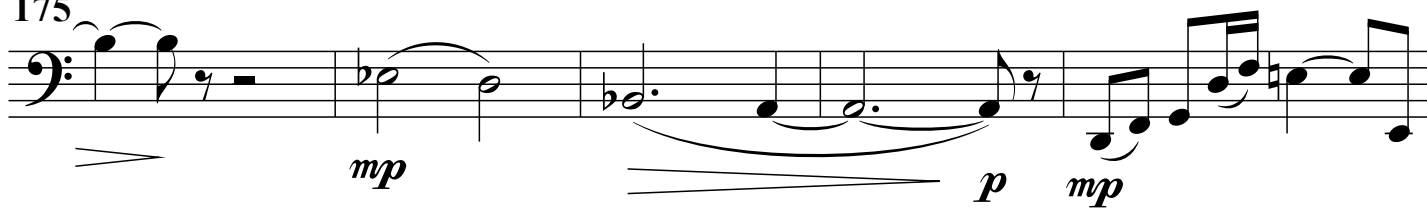
164



170 Postlude ♩ = 80



175



180

